

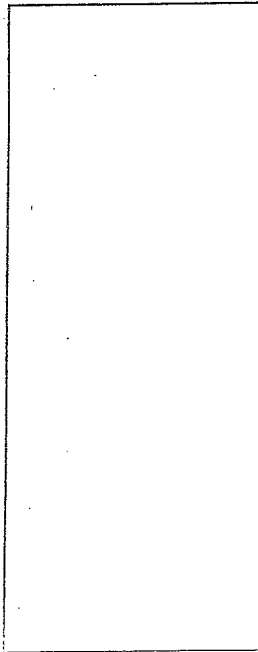
WS- \_\_\_\_\_

NAME: \_\_\_\_\_

# India's Cultural Hearths

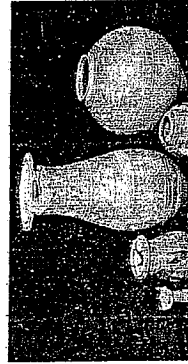
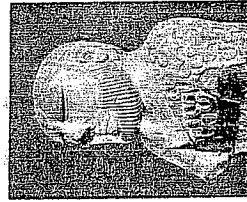
- There were more than \_\_\_\_\_ River in present-day Pakistan.
- The two largest areas of civilization in ancient India were \_\_\_\_\_ and \_\_\_\_\_
- Depended on \_\_\_\_\_
- Traded with \_\_\_\_\_ and Mesopotamia.
- Wanted \_\_\_\_\_ to make \_\_\_\_\_, \_\_\_\_\_, and \_\_\_\_\_
- Can the stamps be understood? \_\_\_\_\_
- Why or why not? \_\_\_\_\_

Sketch some of the symbols from the stamps here:



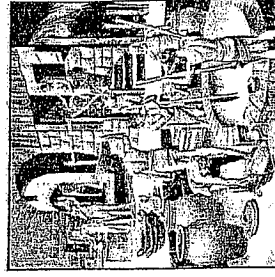
## HARAPPA

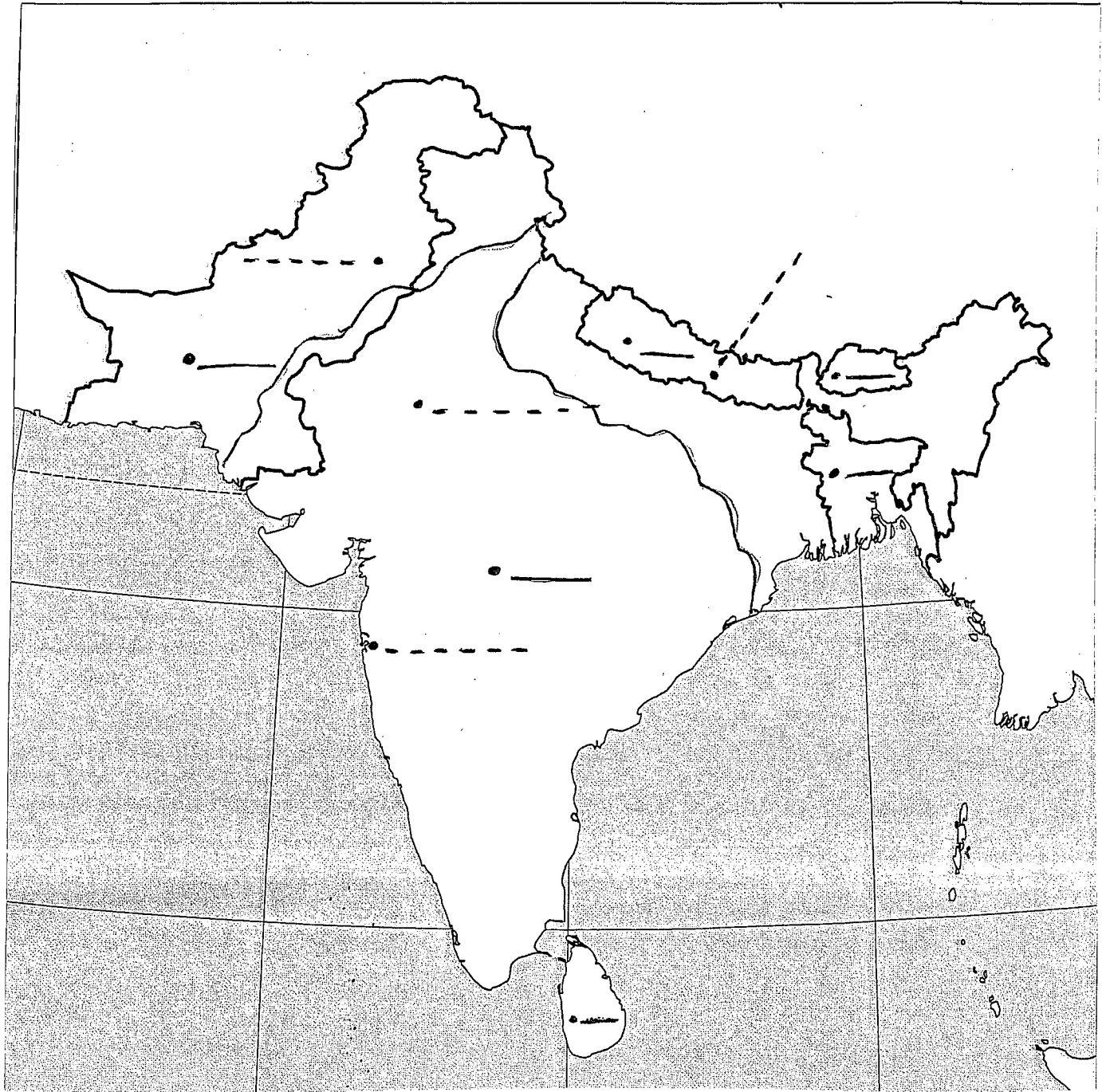
- May have been as many as \_\_\_\_\_ residents.
- Skilled \_\_\_\_\_
- Used \_\_\_\_\_
- Had social \_\_\_\_\_
- Excellent \_\_\_\_\_
- Houses all built with \_\_\_\_\_ and had \_\_\_\_\_ and a \_\_\_\_\_
- Some cities had a \_\_\_\_\_ set high in the city. Perhaps \_\_\_\_\_ lived or worked there.



## MOHENJO DARO

- Likely had \_\_\_\_\_ residents.
- Well planned city with perhaps one of the earliest urban \_\_\_\_\_ systems.
- Buildings included \_\_\_\_\_ granaries, \_\_\_\_\_ and others.
- City was abandoned by around 1900 BC possibly due to \_\_\_\_\_ or \_\_\_\_\_ in the region.
- Granaries could have been used to store \_\_\_\_\_ or for \_\_\_\_\_
- Large quantities of \_\_\_\_\_ debris have been found.
- Many of the houses were \_\_\_\_\_ stories high.





**NUMBER - SOLID LINES**

1. India
2. Bhutan
3. Bangladesh
4. Nepal
5. Sri Lanka

**LETTER - DASH LINES**

- A. Mumbai
- B. Islamabad
- C. Kathmandu
- D. New Delhi

**LABEL**

- ^^^ Himalaya Mtns
- ^^^ Hindu Kush Mtns
- Ganges River
- Indus River

- Bay of Bengal
- Indian Ocean
- ▲ Mt. Everest
- Arabian Sea

- Trace rivers **BLUE BEFORE** coloring the countries. Be careful with the Indus River.
- Use mountain symbols for the Himalayas & Hindu Kush. Color mountain symbols **BROWN**. ^^^ ^
- **BE CAREFUL** to properly locate and label all of the Himalayas. Look at the sample map.
- **COLOR** the five countries using color scheme on page A-31 in text EXCEPT color Bangladesh **RED**.
- **BE CAREFUL** with the Pakistan/India border!